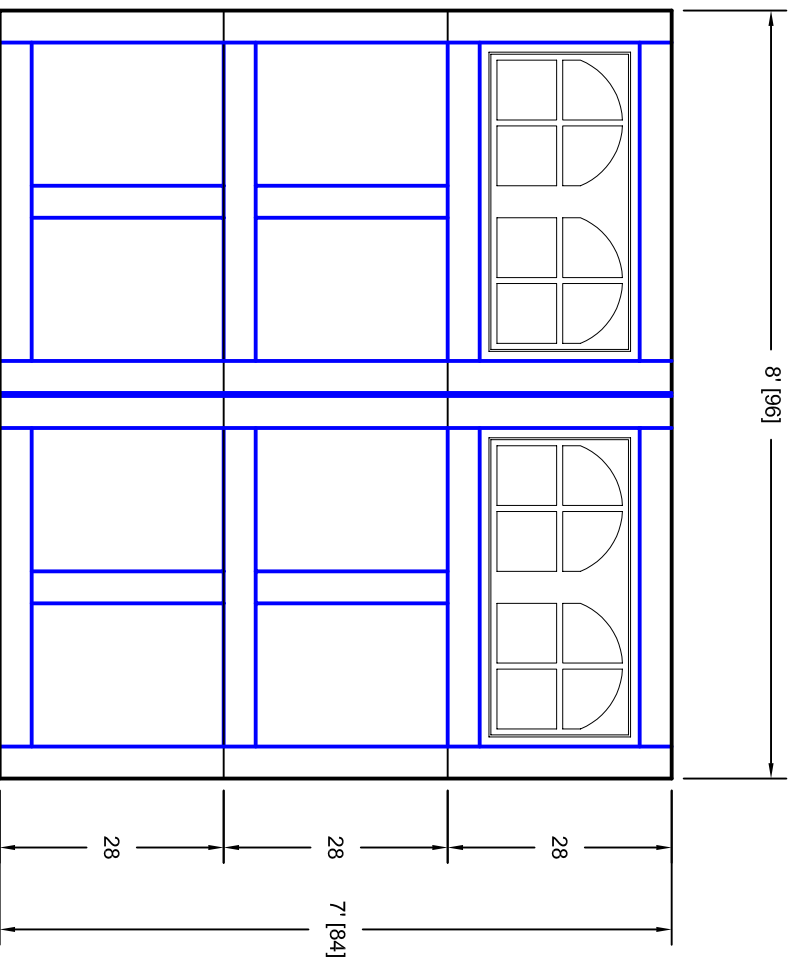




- Note:
1. Overlay board material: Steel.
  2. Arch material: Molded Polyurethane
  3. Overlay board width: 4 inches.
  4. Customer responsible to verify all field dimensions.



CUSTOMER APPROVAL REQUIRED FOR MANUFACTURING

X \_\_\_\_\_

DRAWN BY	E Gebhard 01-05-05	TITLE	Andover w / Small Stockton Arch	
CHECKED		SIZE	Door Lites A4 8' X 7'	
DATE		SCALE	A	REV
DATE		WT. ACT.	7A087004	A
DATE		SHEET		
DATE		Unless Otherwise Specified Dimensions are in Inches Tolerance on Fractions Decimals Angles +/- 1/16 X.X +/- .03 +/- 0.5 X.XX +/- .01 X.XXX +/- .005		
		7255 S. KYRENE SUITE #104 TEMPE, AZ 85283 480-705-6632 480-705-8497 fax www.firstudt.com		