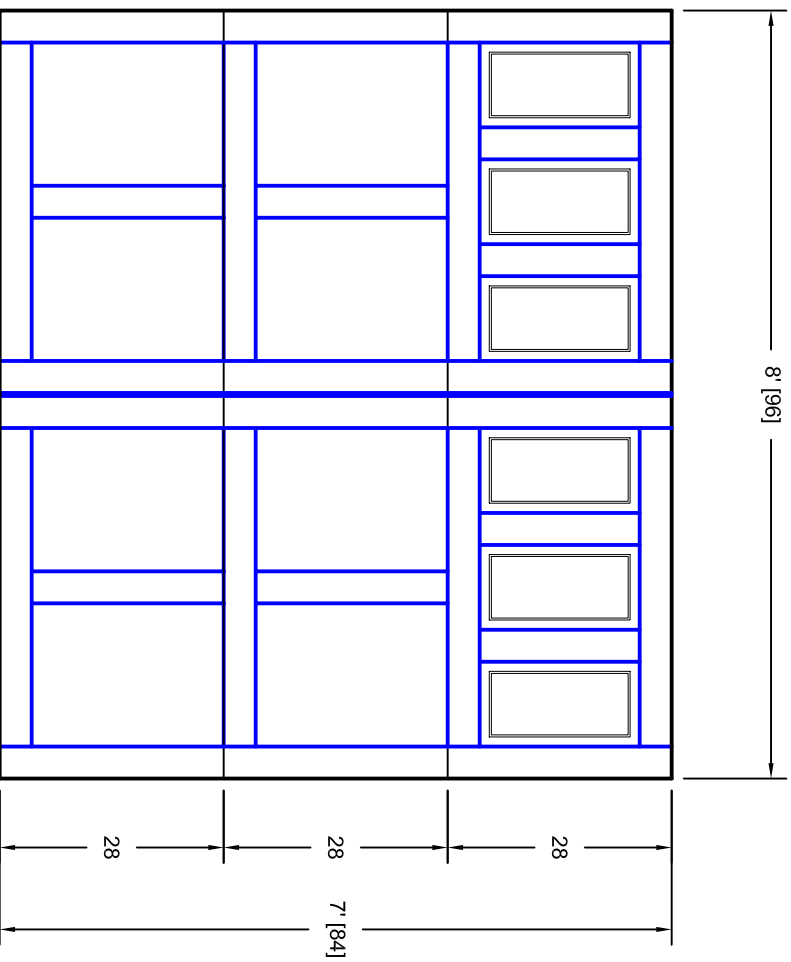


- Note:
1. Overlay board material: Steel.
  2. Arch material: Molded Polyurethane
  3. Overlay board width: 4 inches.
  4. Customer responsible to verify all field dimensions.



DRAWN BY	E Gebhard 01-05-05	TITLE	Andover w / Colonial Door Lites A9		
CHECKED		SIZE	8' X 7'		
DATE		SCALE	A		
APPD		WT. ACT.	7A087009		
DATE		SHEET	A		
APPD		REV	A		
DATE		Unless Otherwise Specified	Dimensions are in Inches		
DATE		Fractions	Tolerance on		
DATE		+/- 1/16	XX +/- .03		
DATE		X.XX +/- .01	X.XXX +/- .005		
DATE		Angles	+/- 0.5		

CUSTOMER APPROVAL REQUIRED FOR MANUFACTURING

X \_\_\_\_\_

7255 S. KYRENE  
SUITE #104  
TEMPE, AZ 85283  
480-705-6632  
480-705-8497 fax  
www.firstudt.com