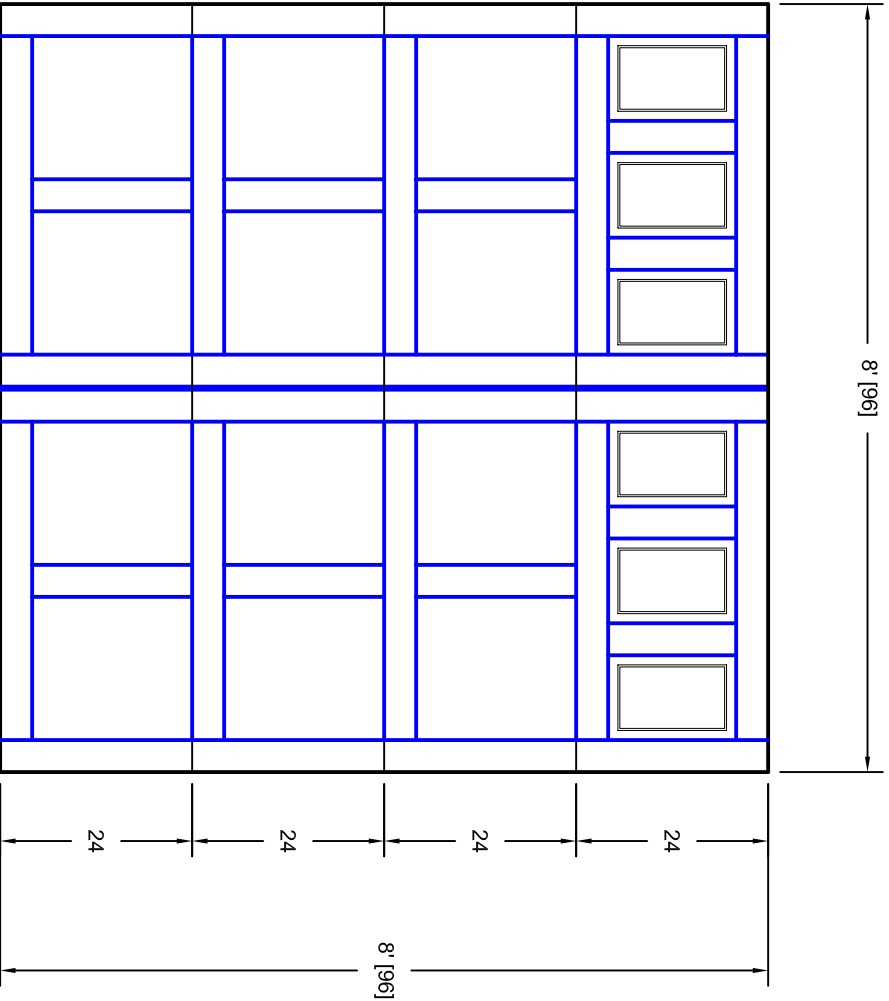


- Note:
1. Overlay board material: Steel.
  2. Arch material: Molded Polyurethane
  3. Overlay board width: 4 inches.
  4. Customer responsible to verify all field dimensions.



DRAWN BY	E Gebhard 06-07-06	TITLE	Andover w / Colonial Glass A9		
CHECKED		SIZE	8' X 8'		
DATE		SCALE	A		
APPD		WT. ACT.	7A088009		
DATE		SHEET	A		
APPD		REV	A		
DATE		Unless Otherwise Specified Dimensions are in Inches Tolerance on Fractions Decimals Angles +/- 1/16    XX +/- .03    +/- 0.5 X.XX +/- .01    X.XXX +/- .005			

CUSTOMER APPROVAL REQUIRED FOR  
MANUFACTURING

X \_\_\_\_\_



7255 S. KYRENE  
SUITE #104  
TEMPE, AZ 85283  
480-705-6632  
480-705-8497 fax  
www.firstudt.com