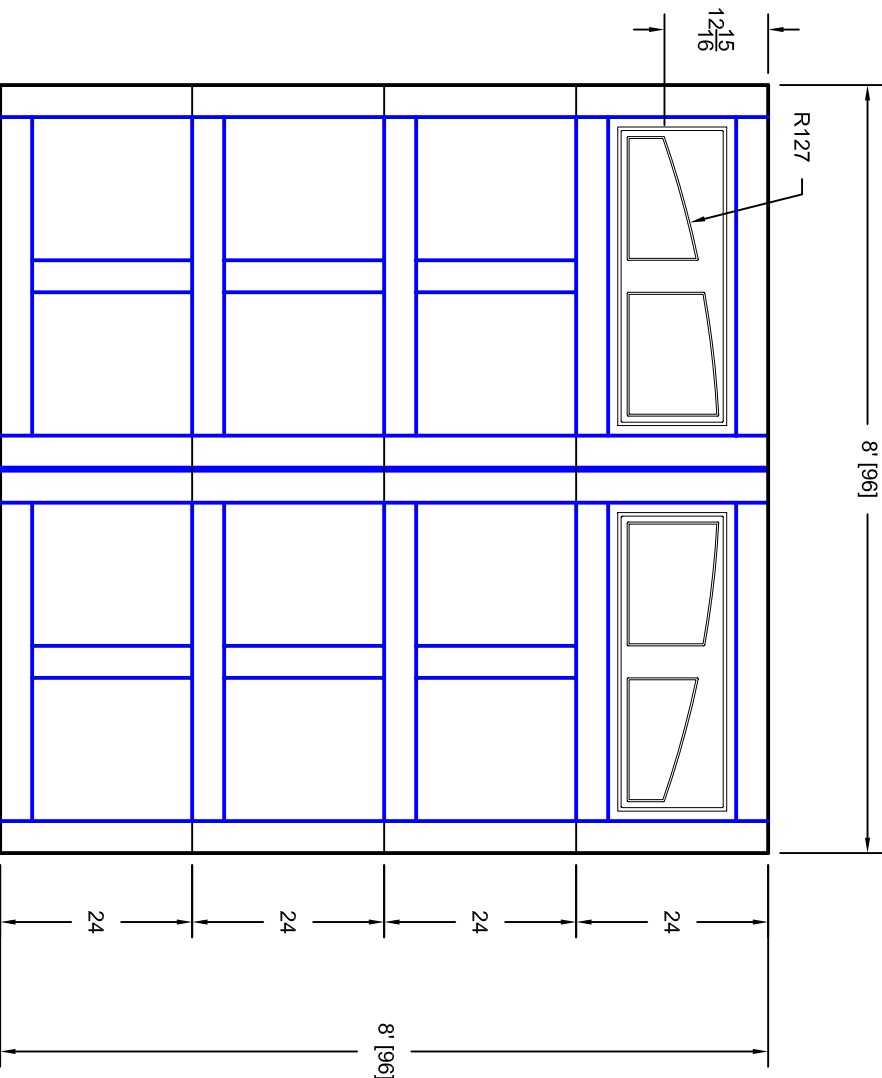



- Note:
1. Overlay board material: Steel.
 2. Arch material: Molded Polyurethane
 3. Overlay board width: 4 inches.
 4. Customer responsible to verify all field dimensions.



CUSTOMER APPROVAL REQUIRED FOR MANUFACTURING

X _____

DRAWN BY	E Gebhard 04-04-06	TITLE	Andover w / Madison Arch Insert A10		
CHECKED		SIZE	8' X 8'		
DATE		SCALE	A		
APPD		WT. ACT.	7A088010		
DATE		SHEET	A		
APPD		REV	A		
DATE		Unless Otherwise Specified Dimensions are in Inches Tolerance on Fractions Decimals Angles +/- 1/16 XX +/- .03 +/- 0.5 X.XX +/- .01 X.XXX +/- .005			
DATE					
		7255 S. KYRENE SUITE #104 TEMPE, AZ 85283 480-705-6632 480-705-8497 fax www.firstudt.com			