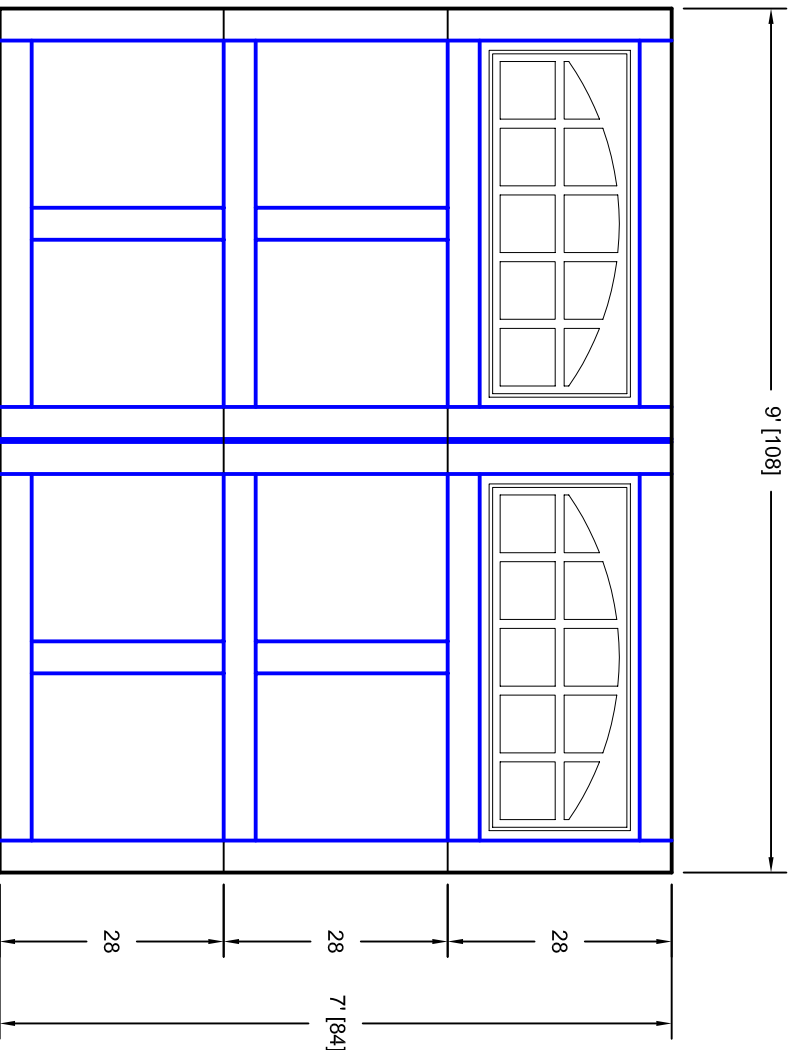


- Note:
1. Overlay board material: Steel.
  2. Arch material: Molded Polyurethane
  3. Overlay board width: 4 inches.
  4. Customer responsible to verify all field dimensions.



DRAWN BY	E Gebhard 01-05-05	TITLE	Andover w / Large Stockton Arch	
CHECKED			Door Lites A2 9' X 7'	
DATE		SIZE	A	REV
APPD		SCALE	WT. ACT.	SHEET
DATE				
APPD				
DATE				
APPD				
DATE				

Unless Otherwise Specified  
Dimensions are in Inches

Tolerance on

Fractions Decimals Angles

+/- 1/16 XX +/- .03 +/- 0.5

XX XX +/- .01

X.XXX +/- .005

CUSTOMER APPROVAL REQUIRED FOR  
MANUFACTURING

X \_\_\_\_\_



7255 S. KYRENE  
SUITE #104  
TEMPE, AZ 85283  
480-705-6632  
480-705-8497 fax  
www.firstudt.com