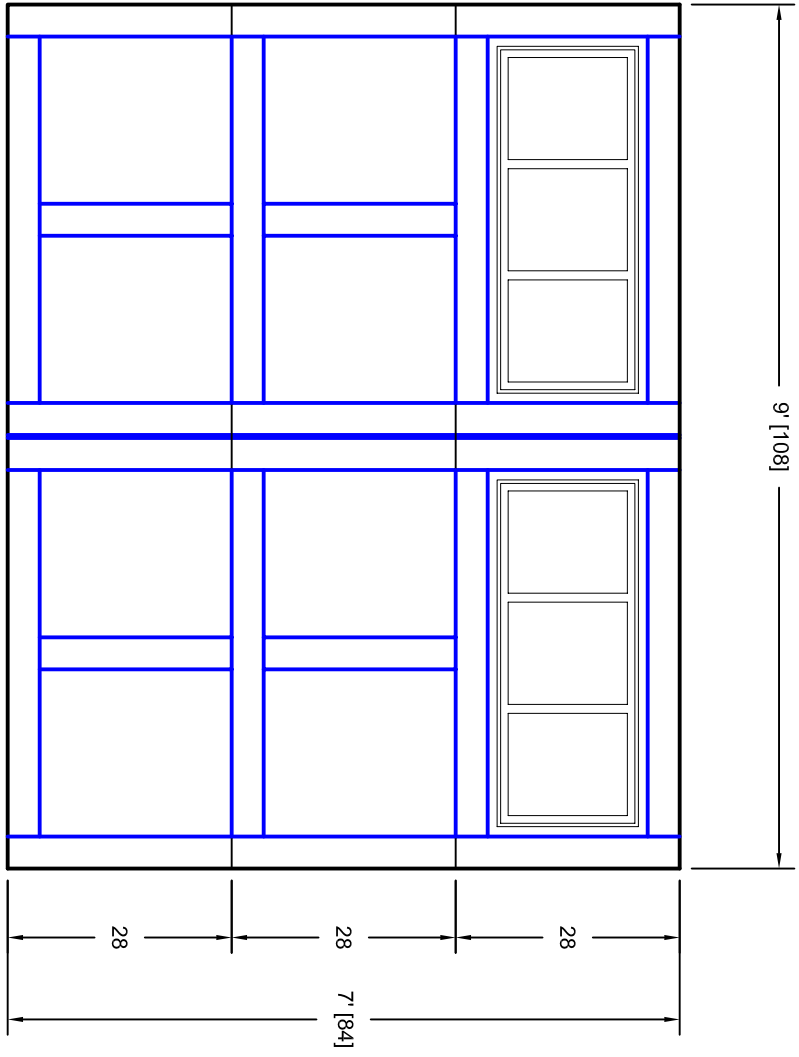


- Note:
1. Overlay board material: Steel.
 2. Arch material: Molded Polyurethane
 3. Overlay board width: 4 inches.
 4. Customer responsible to verify all field dimensions.



CUSTOMER APPROVAL REQUIRED FOR MANUFACTURING

X _____

| | | | | |
|----------|--------------------|----------|---|-----|
| DRAWN BY | E Gebhard 01-05-05 | TITLE | Andover w / Stockbridge Two Bar Door Lites A8 9' X 7' | |
| CHECKED | | SIZE | A | REV |
| DATE | | SCALE | | |
| APPD | | WT. ACT. | | |
| DATE | | SHEET | | |
| APPD | | | | |
| DATE | | | | |
| APPD | | | | |
| DATE | | | | |

Unless Otherwise Specified
Dimensions are in Inches

Tolerance on

| | | |
|-----------|---------------|---------|
| Fractions | Decimals | Angles |
| +/- 1/16 | XX +/- .03 | +/- 0.5 |
| | XXX +/- .01 | |
| | XXXX +/- .005 | |

7255 S. KYRENE SUITE #104
TEMPE, AZ 85283
480-705-6632
480-705-8497 fax
www.firstudt.com