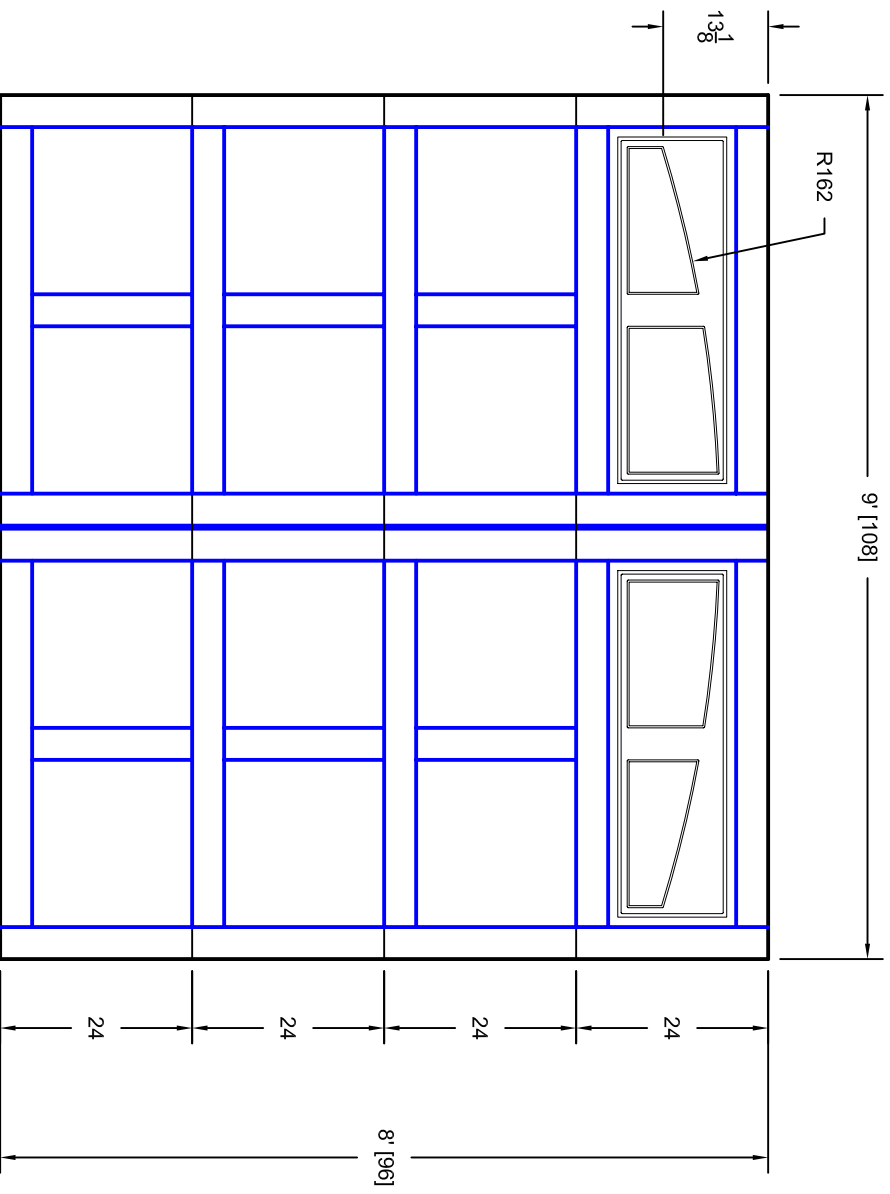




- Note:
1. Overlay board material: Steel.
 2. Arch material: Molded Polyurethane
 3. Overlay board width: 4 inches.
 4. Customer responsible to verify all field dimensions.



DRAWN BY	E Gebhard 03-16-05
CHECKED	
DATE	
APPD	
DATE	
APPD	
DATE	
APPD	
DATE	

TITLE	Andover w / Madison Arch Insert A10		
SIZE	9' X 8'		
SCALE	A	WT. ACT.	
REV	A	SHEET	
	7A098010		

Unless Otherwise Specified
Dimensions are in Inches

Fractions	Decimals	Angles
+/- 1/16	XX +/- .03	+/- 0.5
	XXX +/- .01	
	X.XXX +/- .005	

Tolerance on

CUSTOMER APPROVAL REQUIRED FOR
MANUFACTURING

X _____



7255 S. KYRENE
SUITE #104
TEMPE, AZ 85283
480-705-6632
480-705-8497 fax
www.firstudt.com