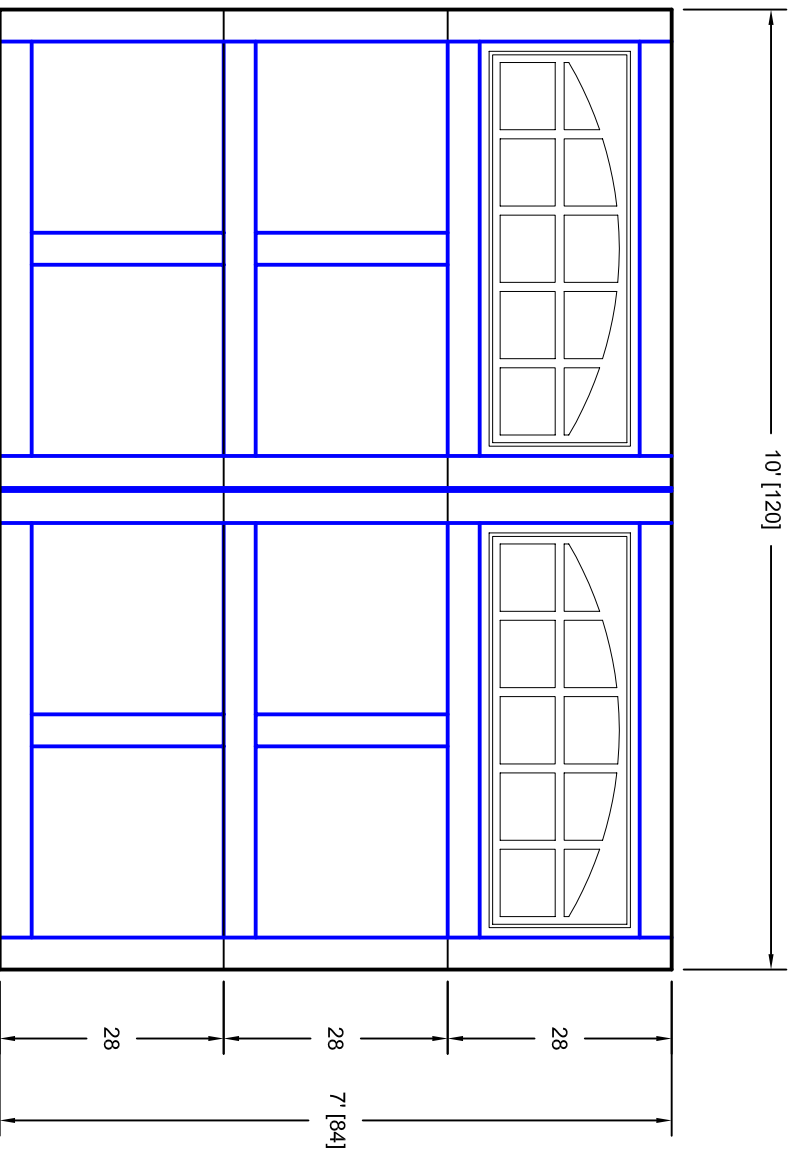


- Note:
1. Overlay board material: Steel.
 2. Arch material: Molded Polyurethane
 3. Overlay board width: 4 inches.
 4. Customer responsible to verify all field dimensions.



CUSTOMER APPROVAL REQUIRED FOR MANUFACTURING

X _____

DRAWN BY	E Gebhard 01-05-05	TITLE	Andover w / Large Stockton Arch	
CHECKED			Door Lites A2 10' X 7'	
DATE		SIZE	A	
APPD		SCALE	WT. ACT. SHEET	
DATE		REV	A	
APPD		7A107002		
DATE		Unless Otherwise Specified Dimensions are in Inches		
APPD		Tolerance on		
DATE		Fractions Decimals Angles		
APPD		+/- 1/16 X.X +/- .03 +/- 0.5		
DATE		X.XXX +/- .005		
APPD				
DATE		7255 S. KYRENE SUITE #104 TEMPE, AZ 85283 480-705-6632 480-705-8497 fax www.firstudt.com		