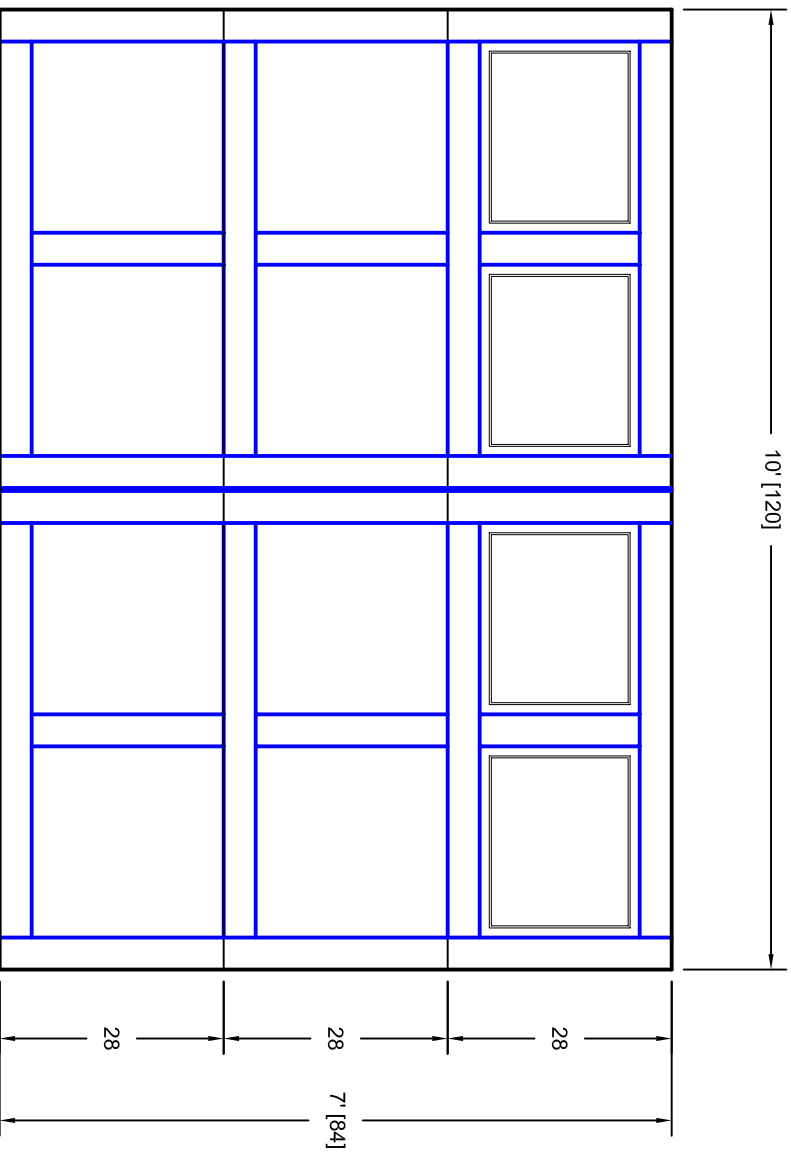




- Note:
1. Overlay board material: Steel.
 2. Arch material: Molded Polyurethane
 3. Overlay board width: 4 inches.
 4. Customer responsible to verify all field dimensions.



CUSTOMER APPROVAL REQUIRED FOR
MANUFACTURING

X _____

| | | | | | |
|----------|--------------------|-------|-----------------------------------|-------|-----|
| DRAWN BY | E Gebhard 01-05-05 | TITLE | Andover w / Small Plain View Door | | |
| CHECKED | | | Lites A6 10' X 7' | | |
| DATE | | SIZE | 7A107006 | | |
| APPD | | SCALE | WT. ACT. | SHEET | REV |
| DATE | | A | | | A |
| APPD | | | | | |
| DATE | | | | | |
| APPD | | | | | |
| DATE | | | | | |

Unless Otherwise Specified
Dimensions are in Inches

Tolerance on

| | | |
|-----------|---------------|---------|
| Fractions | Decimals | Angles |
| +/- 1/16 | XX +/- .03 | +/- 0.5 |
| | XXX +/- .01 | |
| | XXXX +/- .005 | |



7255 S. KYRENE
SUITE #104
TEMPE, AZ 85283
480-705-6632
480-705-8497 fax
www.firstudt.com