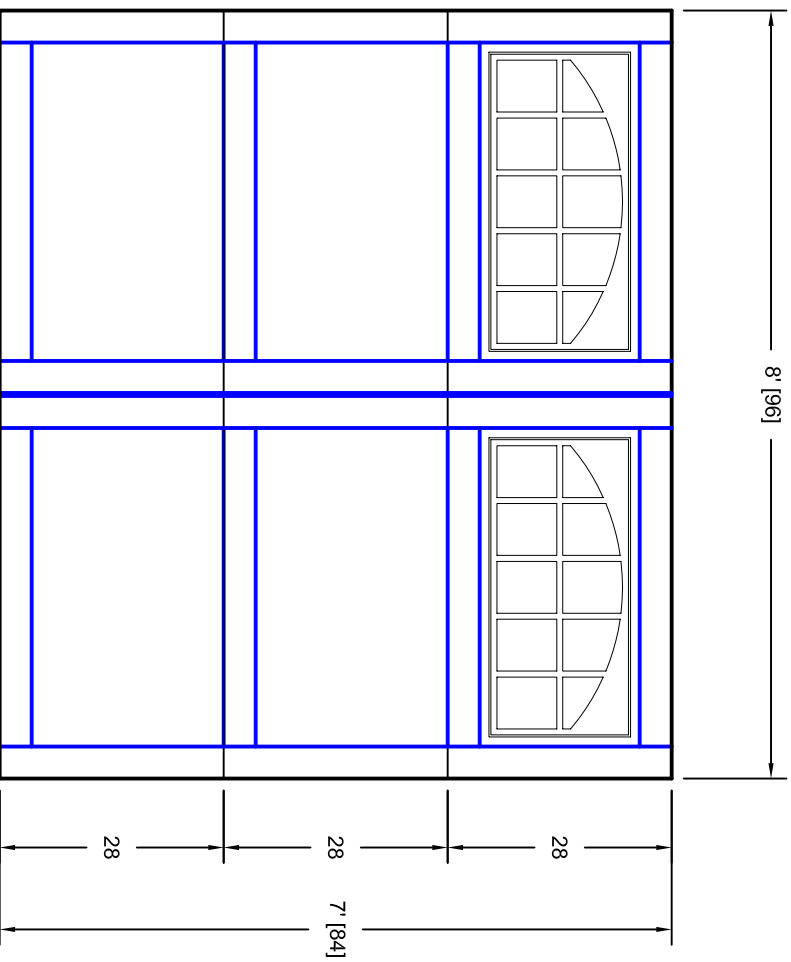


- Note:
1. Overlay board material: Steel.
  2. Arch material: Molded Polyurethane
  3. Overlay board width: 4 inches.
  4. Customer responsible to verify all field dimensions.



CUSTOMER APPROVAL REQUIRED FOR MANUFACTURING

X \_\_\_\_\_

DRAWN BY	E Gebhard 01-05-05	TITLE	Pinehurst w / Large Stockton Arch	
CHECKED		SIZE	A	
DATE		SCALE	WT. ACT. SHEET	
APPD		REV	A	
DATE			7P087002	
APPD			Door Lites P2 8' X 7'	
DATE				
APPD				
DATE				

Unless Otherwise Specified  
Dimensions are in Inches

Tolerance on  
Fractions Decimals Angles  
+/- 1/16    X.X +/- .03    +/- 0.5  
              X.XX +/- .01  
              X.XXX +/- .005



7255 S. KYRENE  
SUITE #104  
TEMPE, AZ 85283  
480-705-6632  
480-705-8497 fax  
www.firstudt.com