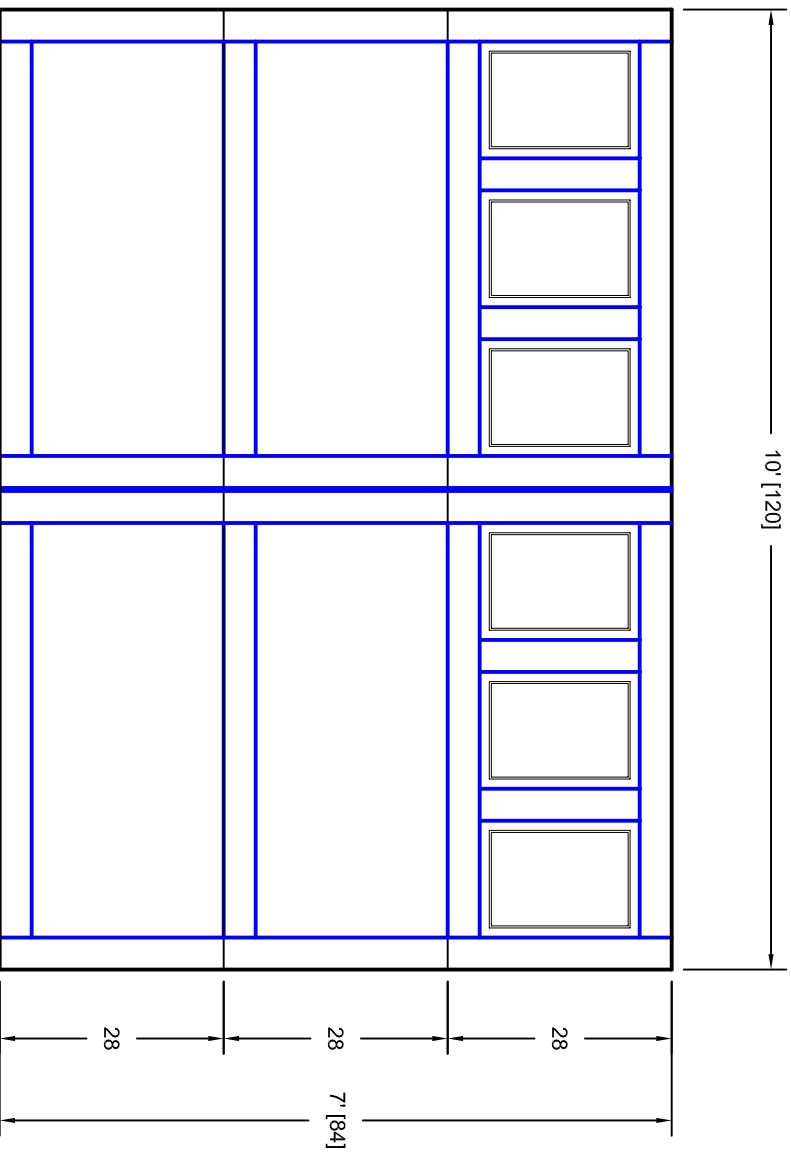




- Note:
1. Overlay board material: Steel.
 2. Arch material: Molded Polyurethane
 3. Overlay board width: 4 inches.
 4. Customer responsible to verify all field dimensions.



CUSTOMER APPROVAL REQUIRED FOR MANUFACTURING

X _____

| | | | | | |
|----------|--------------------|-------|-----------------------------------|-------|-----|
| DRAWN BY | E Gebhard 01-05-05 | TITLE | Pinehurst w / Colonial Door Lites | | |
| CHECKED | | SIZE | 7P107009 | | |
| DATE | | SCALE | WT. ACT. | SHEET | REV |
| APPD | | A | | | A |
| DATE | | | | | |
| APPD | | | | | |
| DATE | | | | | |

| | |
|----------------------------|--------------|
| Unless Otherwise Specified | |
| Dimensions are in Inches | |
| Tolerance on | Angles |
| Fractions Decimals | X.X +/- .03 |
| +/- 1/16 | X.XX +/- .01 |
| X.XXX +/- .005 | +/- 0.5 |

| | |
|--------------|------------------|
| 1ST | 7255 S. KYRENE |
| UNITED DOOR | SUITE #104 |
| TECHNOLOGIES | TEMPE, AZ 85283 |
| | 480-705-6632 |
| | 480-705-8497 fax |
| | www.firstudt.com |