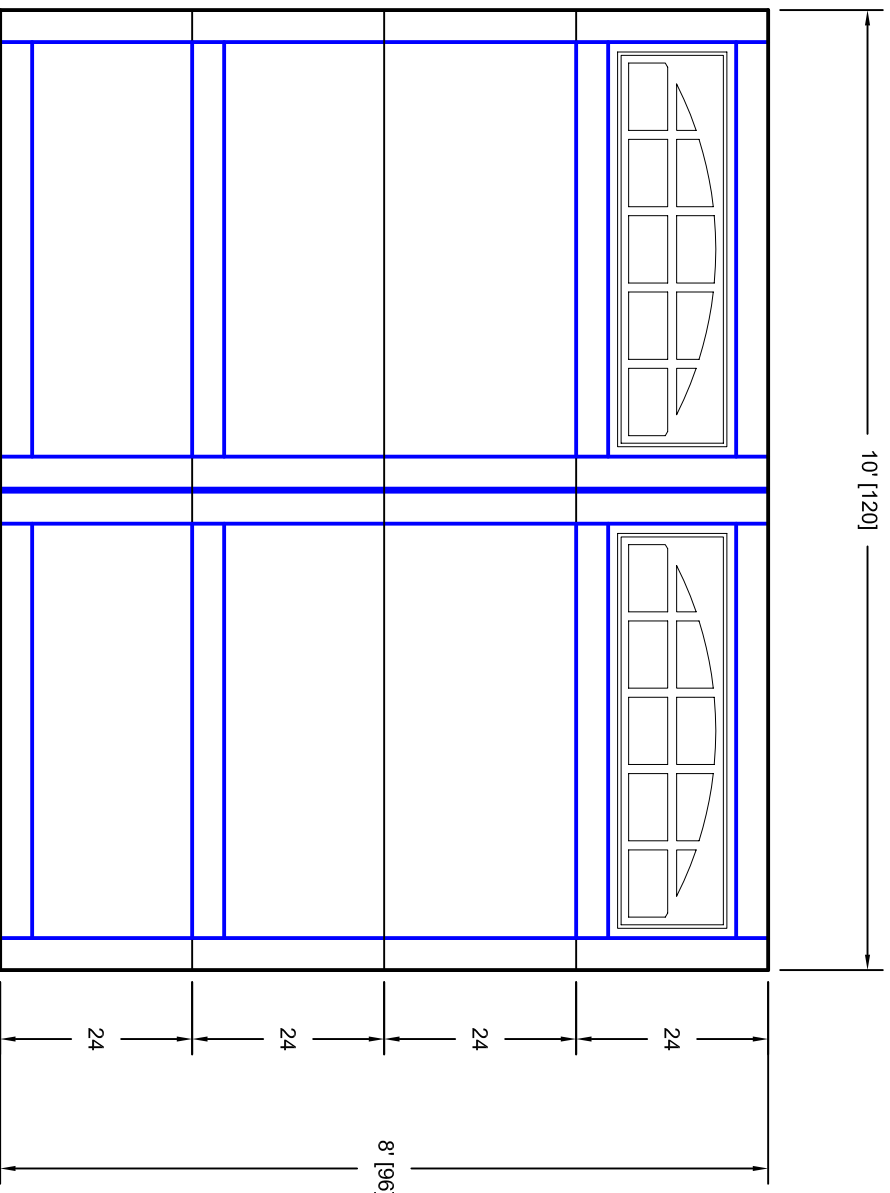




- Note:
1. Overlay board material: Steel.
  2. Arch material: Molded Polyurethane
  3. Overlay board width: 4 inches.
  4. Customer responsible to verify all field dimensions.



CUSTOMER APPROVAL REQUIRED FOR  
MANUFACTURING

X \_\_\_\_\_

|          |                    |       |                                   |       |     |
|----------|--------------------|-------|-----------------------------------|-------|-----|
| DRAWN BY | E Gebhard 02-28-06 | TITLE | Pinehurst w / Large Stockton Arch |       |     |
| CHECKED  |                    |       | Door Lites P2 10' X 8'            |       |     |
| DATE     |                    | SIZE  | 7P108002                          |       |     |
| APPD     |                    | SCALE | WT. ACT.                          | SHEET | REV |
| DATE     |                    | A     |                                   |       | A   |
| APPD     |                    |       |                                   |       |     |
| DATE     |                    |       |                                   |       |     |
| APPD     |                    |       |                                   |       |     |
| DATE     |                    |       |                                   |       |     |

Unless Otherwise Specified  
Dimensions are in Inches

Tolerance on

|           |               |         |
|-----------|---------------|---------|
| Fractions | Decimals      | Angles  |
| +/- 1/16  | XX +/- .03    | +/- 0.5 |
|           | XXX +/- .01   |         |
|           | XXXX +/- .005 |         |

7255 S. KYRENE  
SUITE #104  
TEMPE, AZ 85283  
480-705-6632  
480-705-8497 fax  
www.firstudt.com