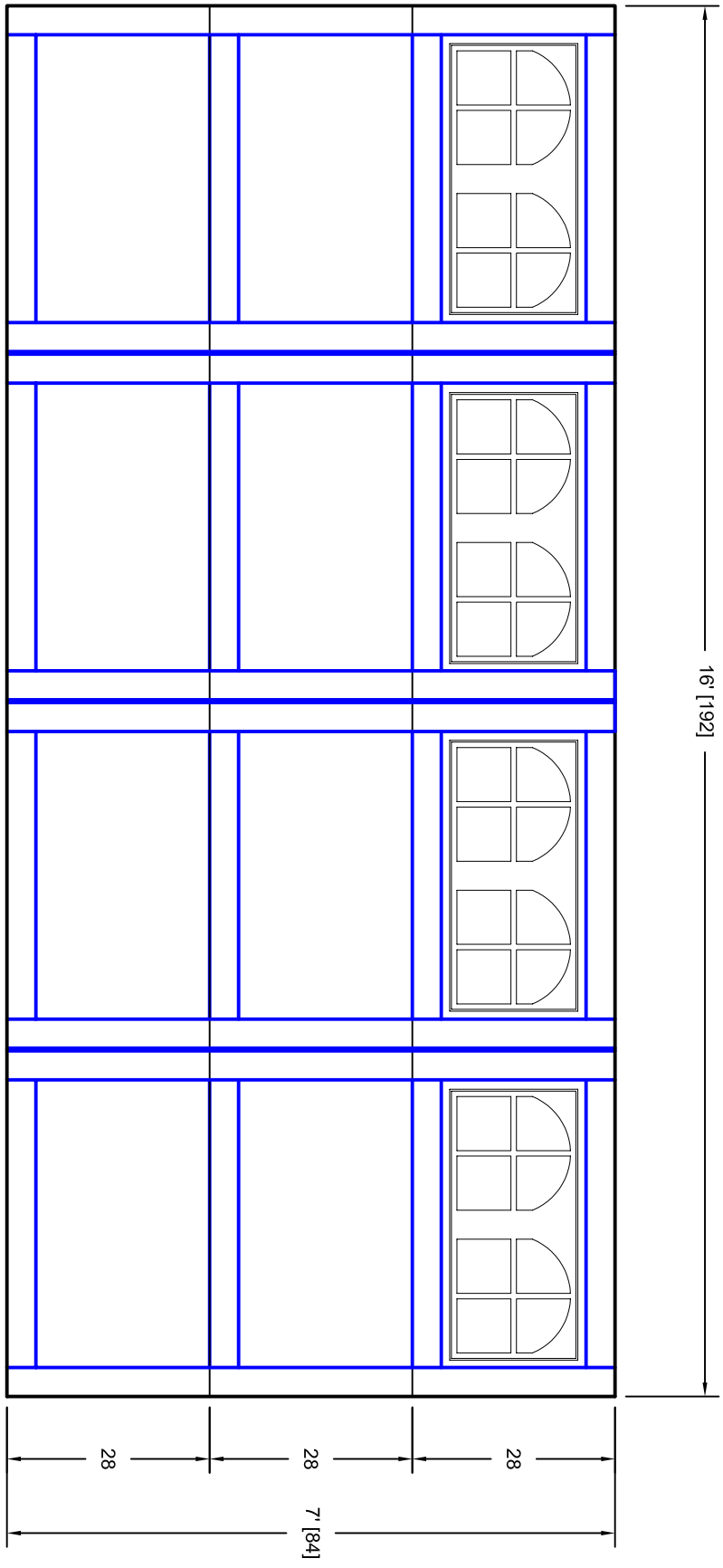




- Note:
1. Overlay board material: Steel.
  2. Arch material: Molded Polyurethane
  3. Overlay board width: 4 inches.
  4. Customer responsible to verify all field dimensions.



CUSTOMER APPROVAL REQUIRED FOR  
MANUFACTURING

X \_\_\_\_\_

DRAWN BY	E Gebhard 01-05-05	TITLE	Pinehurst w / Small Stockton Arch		
CHECKED			Door Lites P4 16' X 7'		
DATE		SIZE	A		
APPD		SCALE	WT. ACT. SHEET		
DATE		REV	A		
APPD			7P167004		
DATE					
APPD					
DATE					

Unless Otherwise Specified  
Dimensions are in Inches

Tolerance on

Fractions	Decimals	Angles
+/- 1/16	XX +/- .03	+/- 0.5
	XXX +/- .01	
	XXXX +/- .005	

7255 S. KYRENE  
SUITE #104  
TEMPE, AZ 85283  
480-705-6632  
480-705-8497 fax  
www.firststudt.com