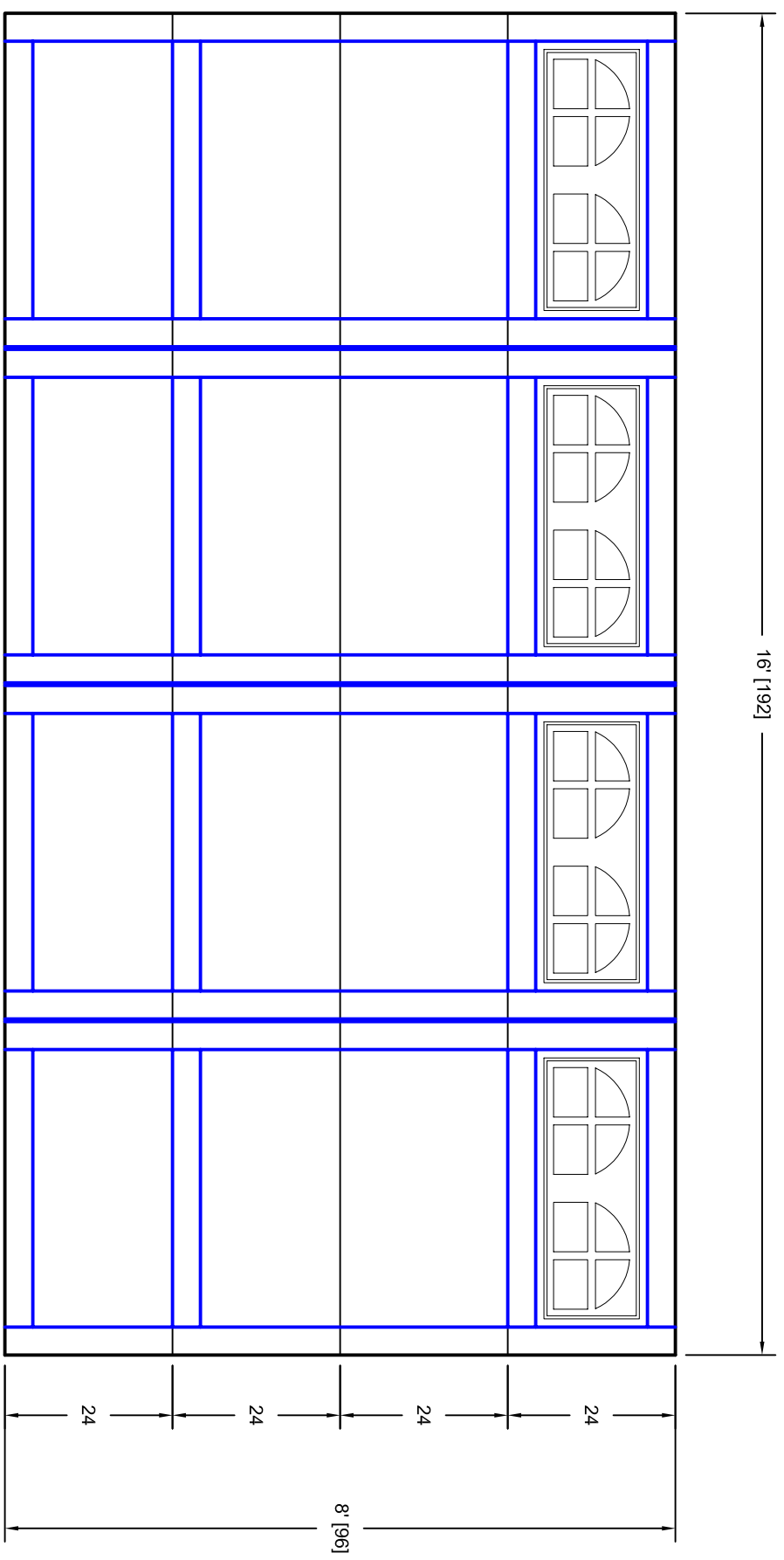




- Note:
1. Overlay board material: Steel.
  2. Arch material: Molded Polyurethane
  3. Overlay board width: 4 inches.
  4. Customer responsible to verify all field dimensions.



CUSTOMER APPROVAL REQUIRED FOR MANUFACTURING

X \_\_\_\_\_

DRAWN BY	E Gebhard 04-04-06	TITLE	Pinehurst w / Small Stockton Arch				
CHECKED			Door Lites P4 16' X 8'				
DATE		SIZE	A				
APPD		SCALE	WT. ACT.				
DATE		REV	A				
APPD			7P168004				
DATE			SHEET				
APPD			Unless Otherwise Specified				
DATE			Dimensions are in Inches				
			Tolerance on				
			Fractions	Decimals	Angles		
			+/- 1/16	XX +/- .03	+/- 0.5		
			X.XXX +/- .01				
			X.XXX +/- .005				
			7255 S. KYRENE				
			SUITE #104			TEMPPE, AZ 85283	
			480-705-6632			480-705-8497 fax	
			www.firstudt.com				