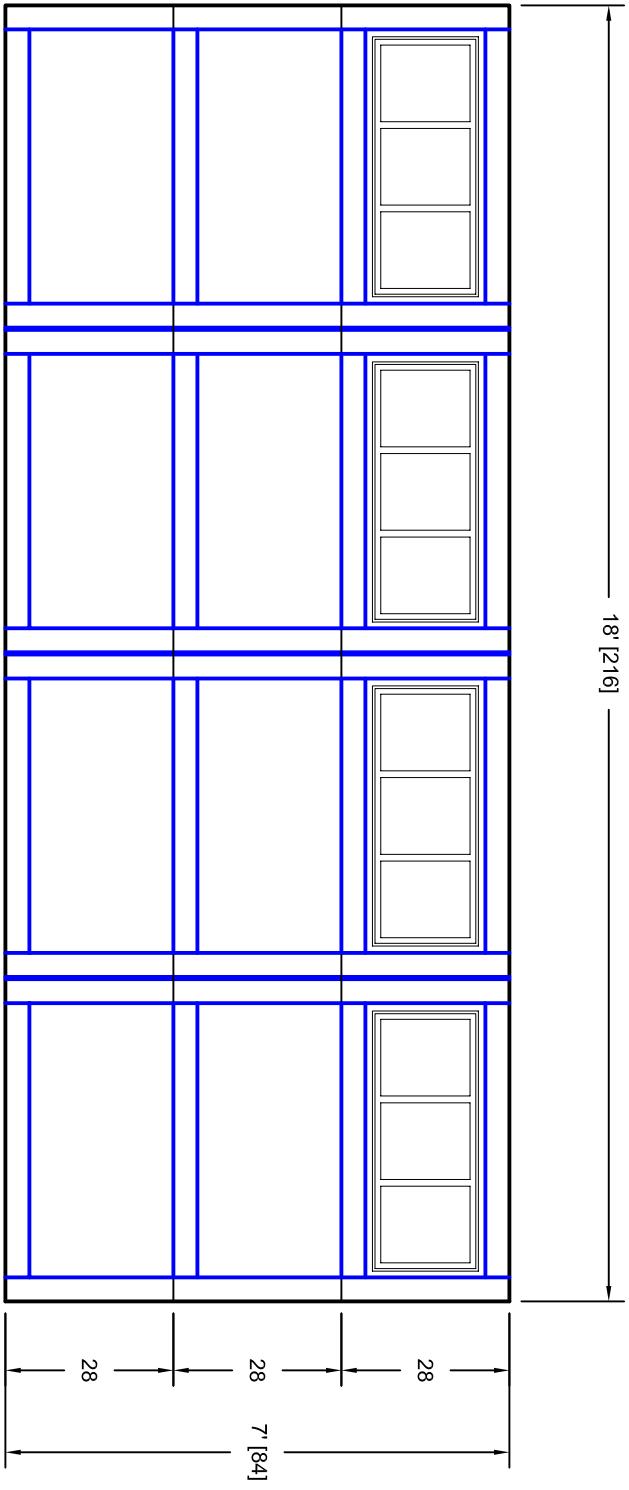




- Note:
1. Overlay board material: Steel.
  2. Arch material: Molded Polyurethane
  3. Overlay board width: 4 inches.
  4. Customer responsible to verify all field dimensions.



CUSTOMER APPROVAL REQUIRED FOR  
MANUFACTURING

X \_\_\_\_\_

DRAWN BY	E Gebhard 01-05-05	TITLE	Pinehurst w / Stockbridge Two Bar		
CHECKED			Door Lites P8 18' X 7'		
DATE		SIZE	A		
APPD		SCALE	A		
DATE		WT. ACT.	7P187008		
APPD		SHEET	A		
DATE					

Unless Otherwise Specified Dimensions are in Inches	
Fractions	Angles
Decimals	
Tolerance on	
XX +/- .03	+/- 0.5
XXX +/- .01	
XXXX +/- .005	
+/- 1/16	

 <b>IST</b> UNITED DOOR TECHNOLOGIES	7255 S. KYRENE SUITE #104 TEMPE, AZ 85283 480-705-6632 480-705-8497 fax www.firstudt.com
--	---