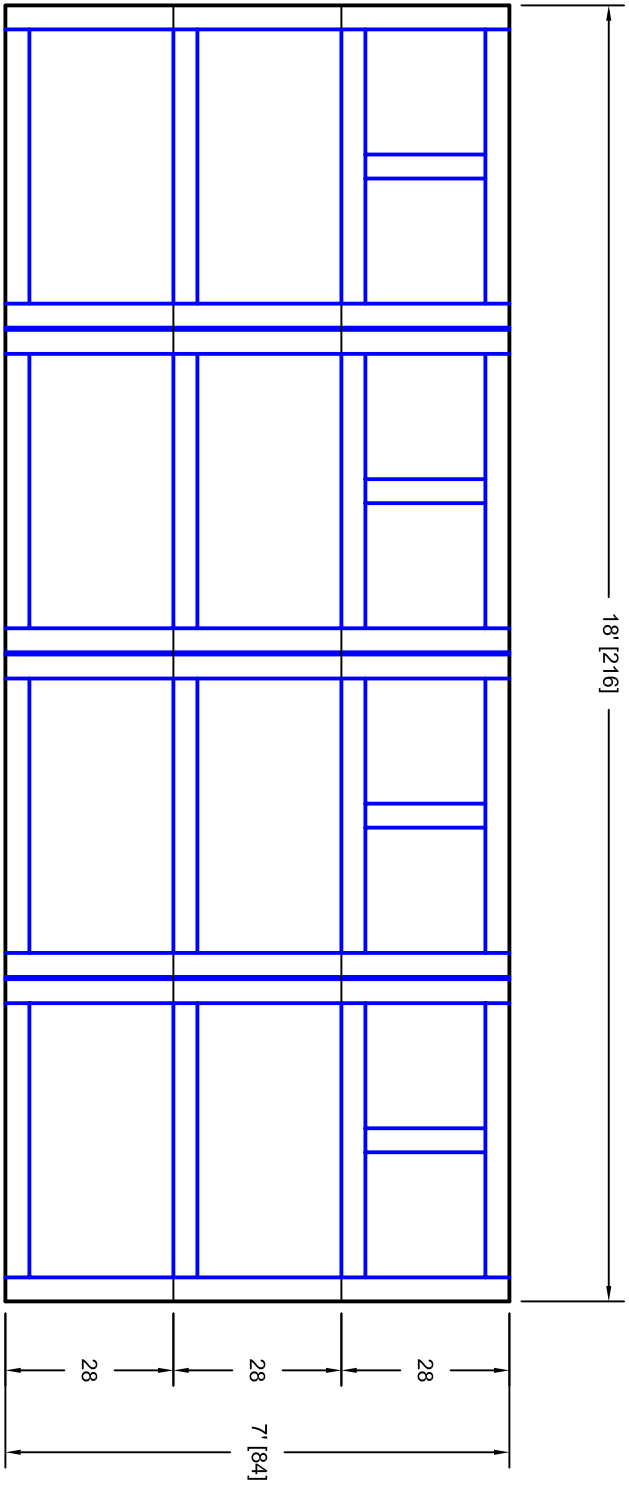




- Note:
1. Overlay board material: Steel.
  2. Arch material: Molded Polyurethane
  3. Overlay board width: 4 inches.
  4. Customer responsible to verify all field dimensions.



CUSTOMER APPROVAL REQUIRED FOR  
MANUFACTURING

X \_\_\_\_\_

DRAWN BY	E Gebhard 01-05-05	TITLE	Pinehurst w / Small Solid Top		
CHECKED			P15 18' X 7'		
DATE		SIZE	A		
APPD		SCALE	A		
DATE		WT. ACT.	7P187015		
APPD		SHEET	A		
DATE					
		Unless Otherwise Specified		Tolerance on	
		Fractions		Decimals	
		+/- 1/16		X.X +/- .03	
		X.XXX +/- .005		X.XX +/- .01	
				Angles	
				+/- 0.5	
				<b>7255 S. KYRENE</b> <b>SUITE #104</b> <b>TEMPE, AZ 85283</b> <b>480-705-6632</b> <b>480-705-8497 fax</b> <b>www.firstudt.com</b>	