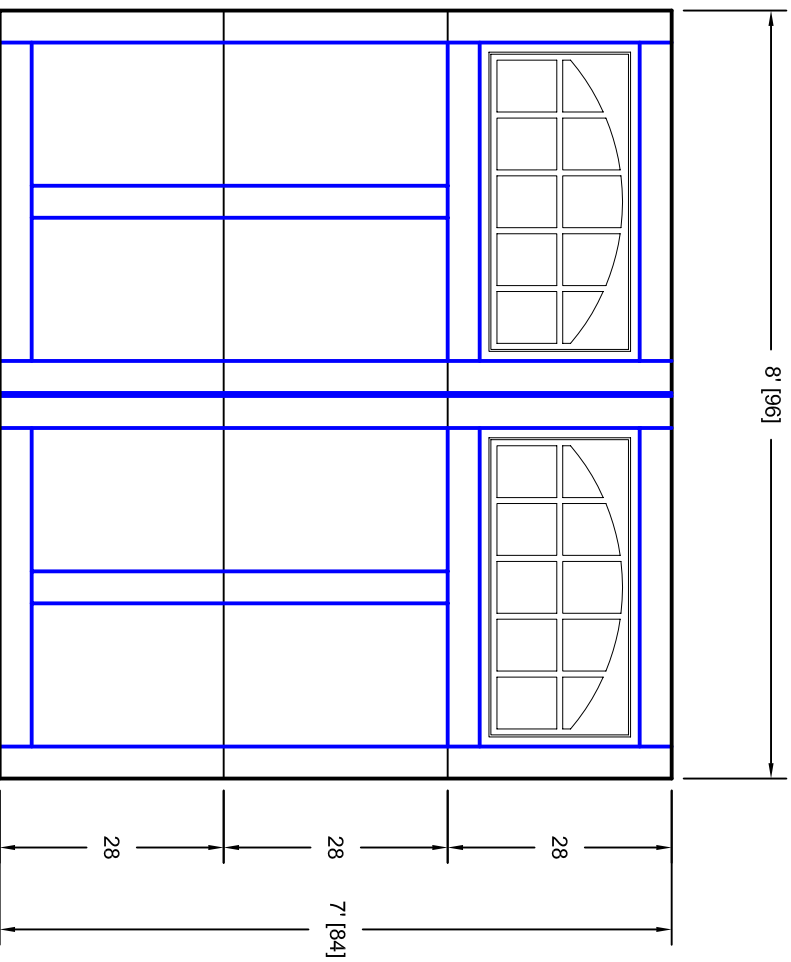




- Note:
1. Overlay board material: Steel.
 2. Arch material: Molded Polyurethane
 3. Overlay board width: 4 inches.
 4. Customer responsible to verify all field dimensions.



DRAWN BY	E Gebhard 01-05-05
CHECKED	
DATE	
APPD	
DATE	
APPD	
DATE	
APPD	
DATE	

TITLE	Sage Creek w / Large Stockton Arch		
	Insert S2 8' X 7'		
SIZE	A	REV	A
SCALE		WT. ACT.	SHEET
	7S087002		

Unless Otherwise Specified
Dimensions are in Inches

Tolerance on

Fractions	Decimals	Angles
+/- 1/16	XX +/- .03	+/- 0.5
	XXX +/- .01	
	XXXX +/- .005	

7255 S. KYRENE
SUITE #104
TEMPE, AZ 85283
480-705-6632
480-705-8497 fax
www.firstudt.com

CUSTOMER APPROVAL REQUIRED FOR
MANUFACTURING

X _____