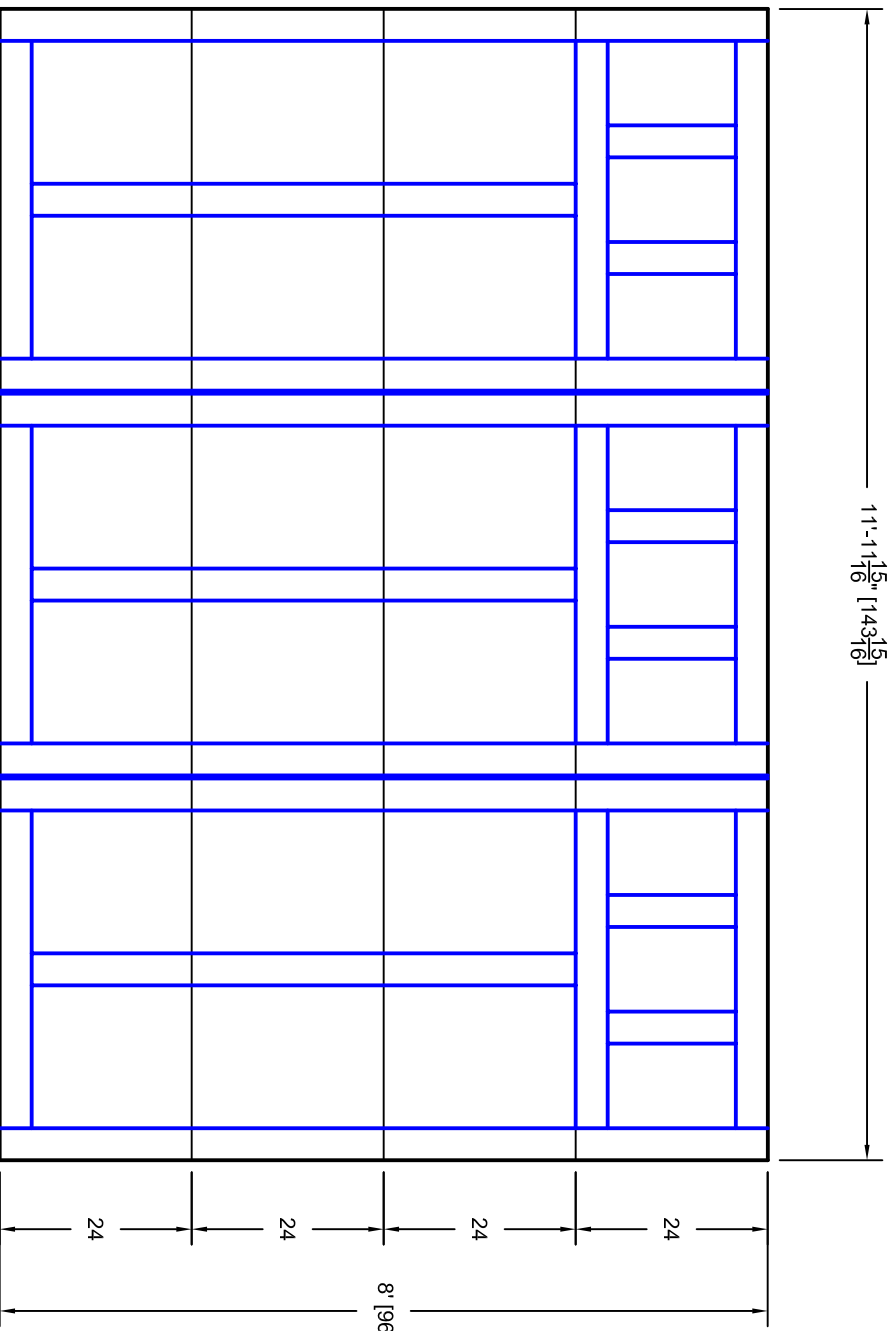




- Note:
1. Overlay board material: Steel.
 2. Arch material: Molded Polyurethane
 3. Overlay board width: 4 inches.
 4. Customer responsible to verify all field dimensions.



CUSTOMER APPROVAL REQUIRED FOR MANUFACTURING

DRAWN BY	E Gebhard 12-14-05	TITLE	Sage Creek w / Colonial Solid Top		
CHECKED		SIZE	S16 12' X 8'		
DATE		SCALE	A		
APPD		WT. ACT.	7S128016		
DATE		SHEET	A		
APPD		REV	A		
DATE		Unless Otherwise Specified Dimensions are in Inches Tolerance on Fractions Decimals Angles +/- 1/16 XX +/- .03 +/- 0.5 XXXX +/- .01			
7255 S. KYRENE SUITE #104 TEMPE, AZ 85283 480-705-6632 480-705-8497 fax www.firstudt.com					