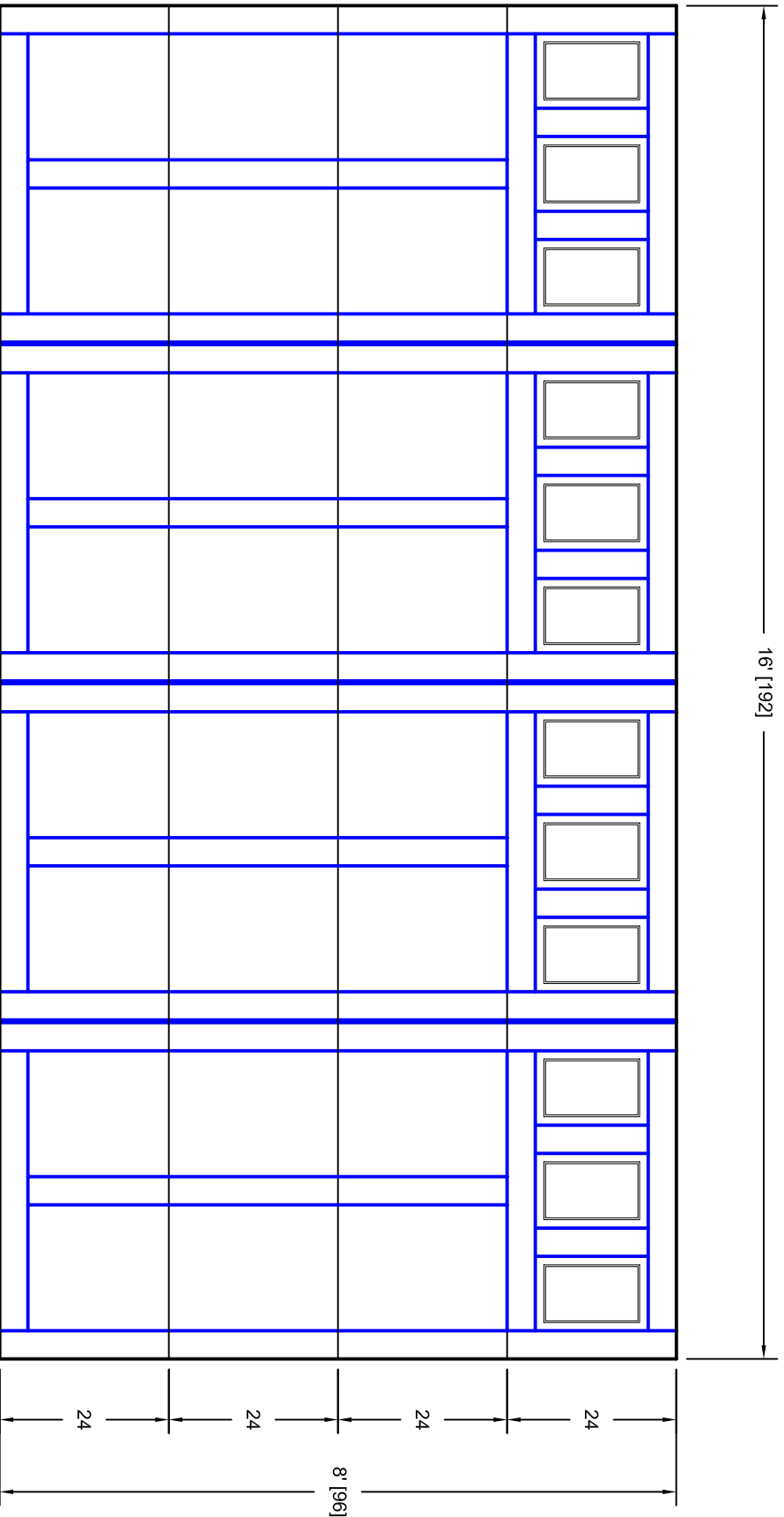




- Note:
1. Overlay board material: Steel.
 2. Arch material: Molded Polyurethane
 3. Overlay board width: 4 inches.
 4. Customer responsible to verify all field dimensions.



CUSTOMER APPROVAL REQUIRED FOR
MANUFACTURING

X _____

DRAWN BY	E Gebhard 12-14-05	TITLE	Sage Creek w / Colonial Door Lites		
CHECKED		DATE	S9 16' X 8'		
DATE		SIZE	A		
APPD		SCALE	A		
DATE		WT. ACT.	7S168009		
APPD		SHEET	A		
DATE		REV	A		
Unless Otherwise Specified Dimensions are in Inches Tolerance on Fractions Decimals Angles +/- 1/16 X.X +/- .03 +/- 0.5 X.XX +/- .01 X.XXX +/- .005					
			7255 S. KYRENE SUITE #104 TEMPE, AZ 85283 480-705-6632 480-705-8497 fax www.firststudt.com		