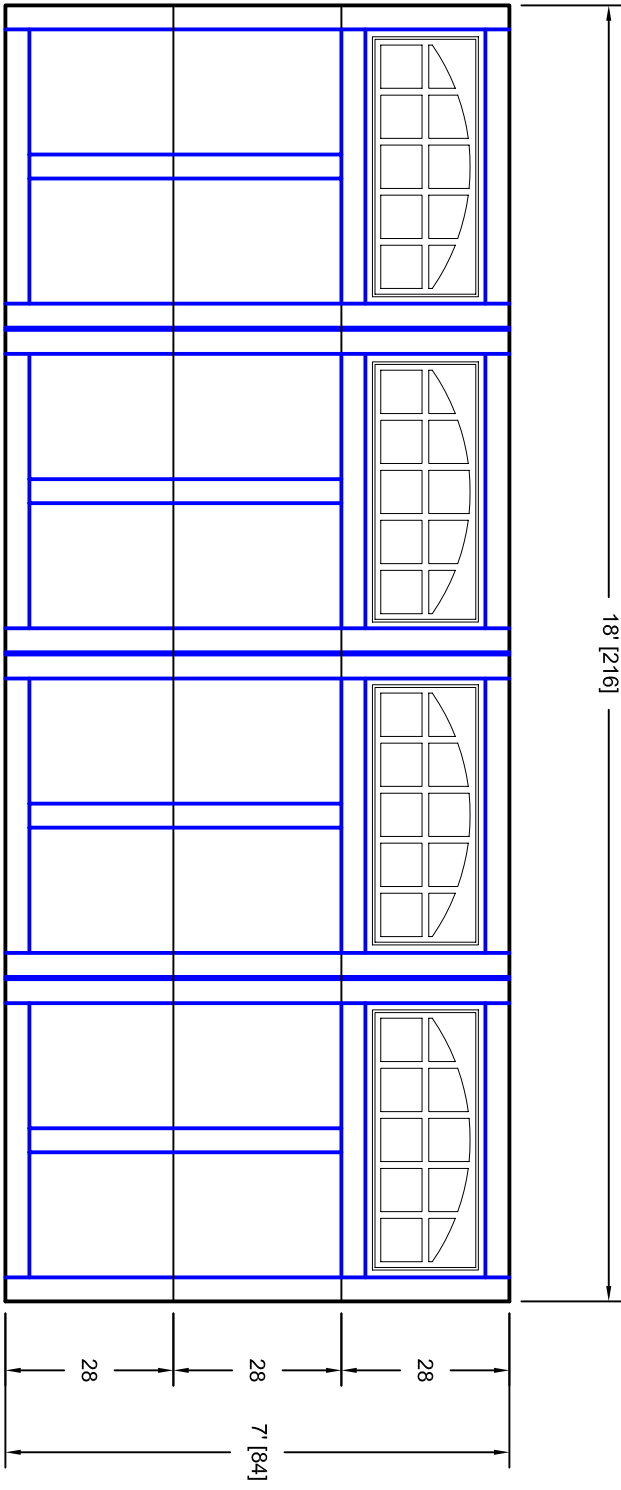




- Note:
1. Overlay board material: Steel.
  2. Arch material: Molded Polyurethane
  3. Overlay board width: 4 inches.
  4. Customer responsible to verify all field dimensions.



CUSTOMER APPROVAL REQUIRED FOR  
MANUFACTURING

X \_\_\_\_\_

DRAWN BY	E Gebhard 01-05-05	TITLE	Sage Creek w / Large Stockton Arch		
CHECKED			Door Lites S2 18' X 7'		
DATE		SIZE	A	REV	A
APPD		SCALE	WT. ACT.	SHEET	
DATE		7S187002			
APPD		Unless Otherwise Specified Dimensions are in Inches Tolerance on Fractions Decimals Angles +/- 1/16    X.X +/- .03    +/- 0.5 X.XX +/- .01 X.XXX +/- .005			
DATE					
APPD		7255 S. KYRENE SUITE #104 TEMPE, AZ 85283 480-705-6632 480-705-8497 fax www.firstudt.com			
DATE					