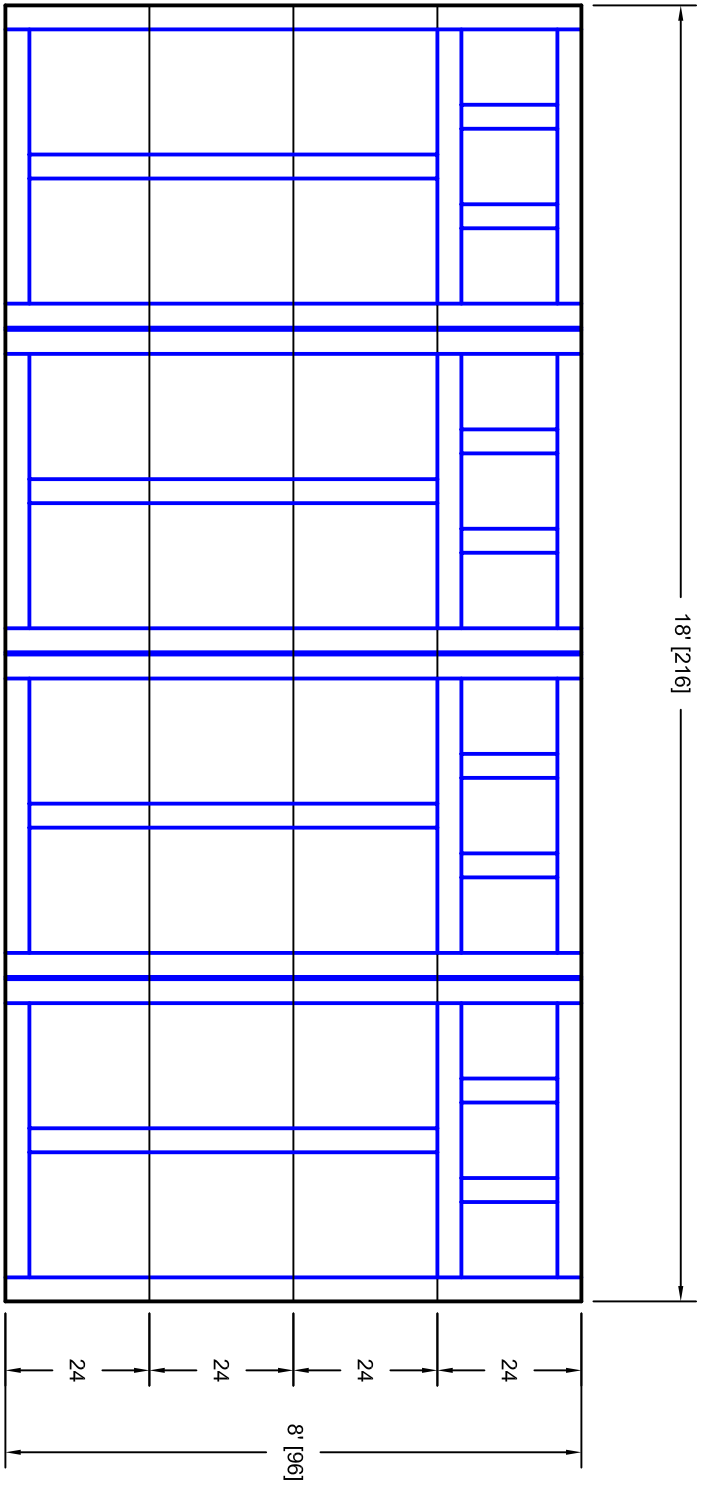




- Note:
1. Overlay board material: Steel.
 2. Arch material: Molded Polyurethane
 3. Overlay board width: 4 inches.
 4. Customer responsible to verify all field dimensions.



CUSTOMER APPROVAL REQUIRED FOR
MANUFACTURING

X _____

DRAWN BY	E Gebhard 01-05-05	TITLE	Sage Creekw / Colonial Solid Top		
CHECKED			S16 18' X 8'		
DATE		SIZE	A		
APPD		SCALE	WT. ACT.		
DATE		REV	A		
APPD			7S188016		
DATE			SHEET		
APPD			Unless Otherwise Specified		
DATE			Dimensions are in Inches		
			Tolerance on		
			Fractions	Decimals	Angles
			+/- 1/16	X.X +/- .03	+/- 0.5
			X.XXX +/- .01		
			X.XXX +/- .005		
				7255 S. KYRENE SUITE #104 TEMPE, AZ 85283 480-705-6632 480-705-8497 fax www.firstudt.com	