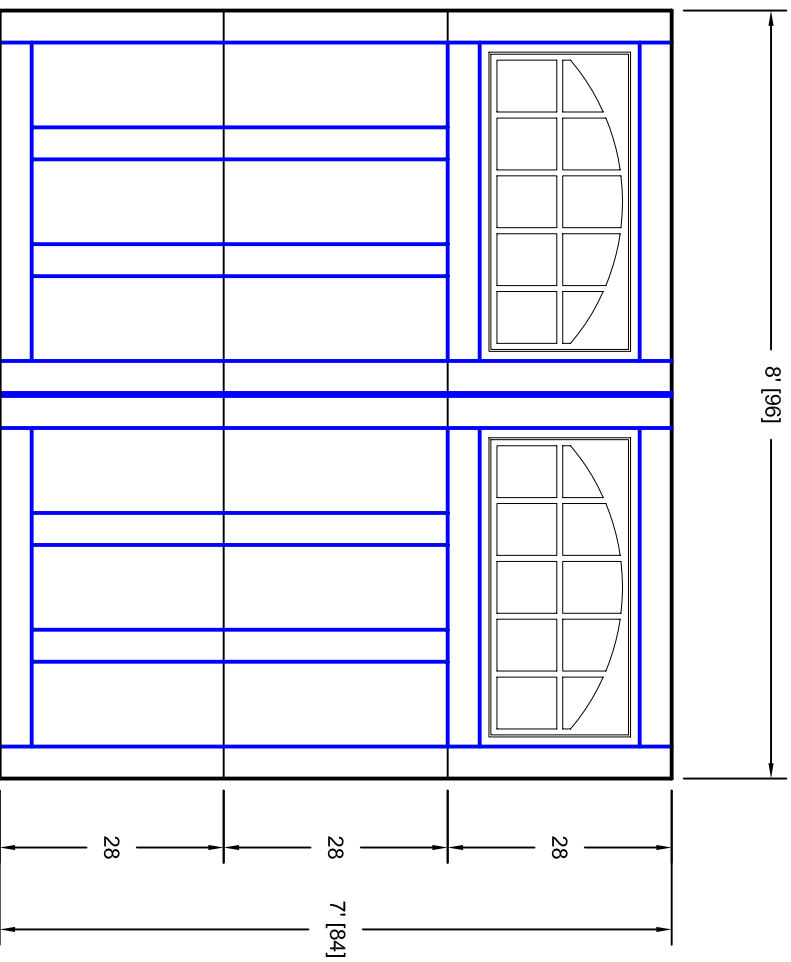


- Note:
1. Overlay board material: Steel.
 2. Arch material: Molded Polyurethane
 3. Overlay board width: 4 inches.
 4. Customer responsible to verify all field dimensions.



CUSTOMER APPROVAL REQUIRED FOR MANUFACTURING

X _____

DRAWN BY	E Gebhard 01-05-05	TITLE	Tehama w / Large Stockton Arch	
CHECKED			Insert T2 8' X 7'	
DATE		SIZE	A	REV
APPD		SCALE		A
DATE		WT. ACT.		
APPD		SHEET		
DATE				

Unless Otherwise Specified		
Dimensions are in Inches		
Fractions	Decimals	Angles
+/- 1/16	XX +/- .03	+/- 0.5
	XXX +/- .01	
	XXXX +/- .005	

1ST	7255 S. KYRENE
UNITED DOOR	SUITE #104
TECHNOLOGIES	TEMPE, AZ 85283
	480-705-6632
	480-705-8497 fax
	www.firstudt.com