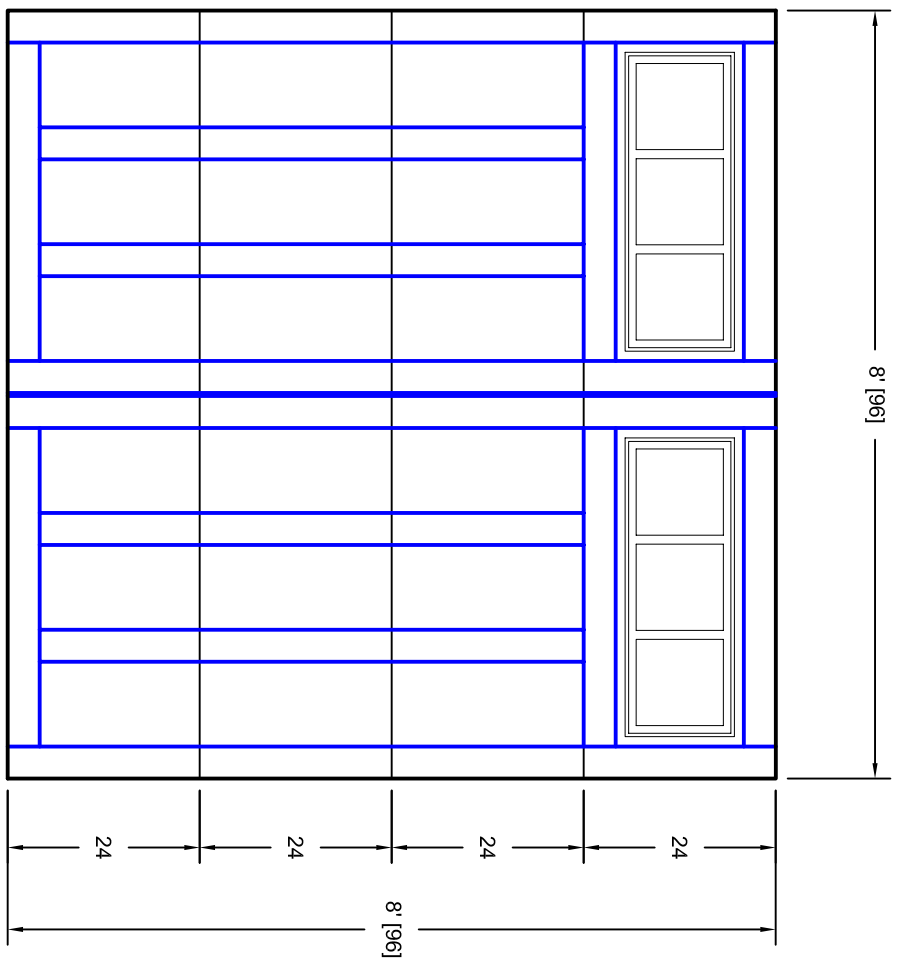


- Note:
1. Overlay board material: Steel.
  2. Arch material: Molded Polyurethane
  3. Overlay board width: 4 inches.
  4. Customer responsible to verify all field dimensions.



DRAWN BY	E Gebhard 12-14-05
CHECKED	
DATE	
APPD	
DATE	
APPD	
DATE	
APPD	
DATE	

TITLE	Tehama w / Stockbridge Two Bar Door Lites T8 8' X 8'		
SIZE	A	REV	A
SCALE		WT. ACT.	SHEET
	7T088008		

Unless Otherwise Specified  
Dimensions are in Inches

Tolerance on

Fractions	Decimals	Angles
+/- 1/16	XX +/- .03	+/- 0.5
	XXX +/- .01	
	XXXX +/- .005	

**1ST UNITED DOOR TECHNOLOGIES**

**7255 S. KYRENE SUITE #104**  
**TEMPE, AZ 85283**  
**480-705-6632**  
**480-705-8497 fax**  
**www.firstudt.com**

CUSTOMER APPROVAL REQUIRED FOR MANUFACTURING

X \_\_\_\_\_